



POLAR VRF SERIES INDUSTRYSYSTEM

UNIQUE SOLUTIONS – OUTSTANDING RESULTS

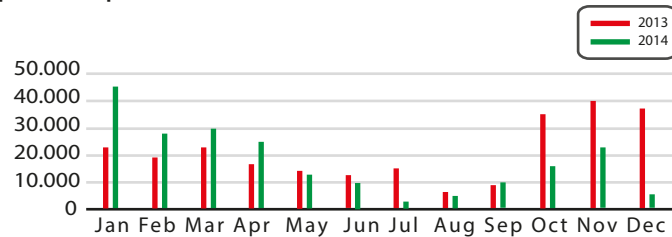
This is an example from one of our local installations in Ibestad Kommune, a multiuse building with sports complex, public section and swimming pool.

The following is based on data given to us directly from our customer Ibestad Kommune.

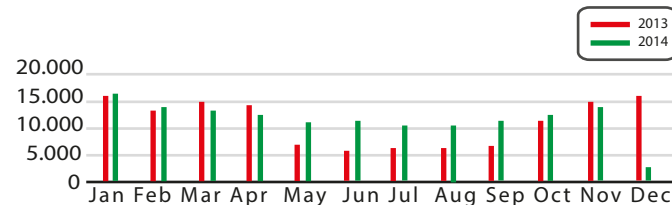
Facts:

- The VRF System replaced an oil burner with an annual consumption of 29.049 liters Costing € 42.510.
- The System is not fully integrated or optimized as 1 electric boiler still remains in use.
- The building is not renovated or altered in connection with the installation of Polars VRF System.
- Temperature settings and usage of building has not been changed.
- Power consumption after installation of Polar's Industry System has been reduced by 59.992 kW.
- This represents a saving of € 12.161,11 in power consumption alone in addition to removing Oil completely.

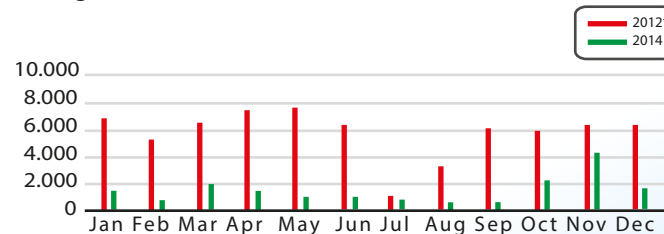
Sports Complex



Public Section



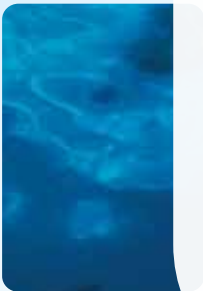
Swimming Pool



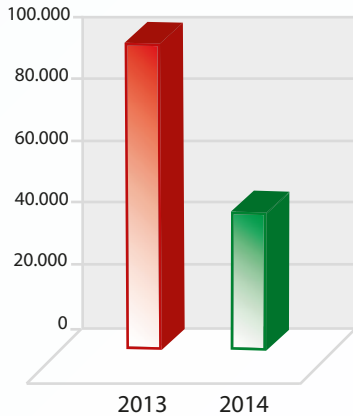
* Data used is 2012 due to operational shutdown during 2013.

THIS REPRESENTS € 54.671,84 IN SAVINGS THE FIRST YEAR !

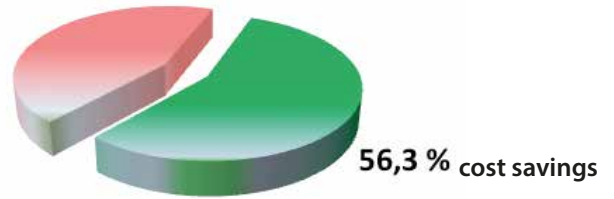
- SUITABLE FOR:**
- blocks of flats
 - sports, industrial, commercial buildings
 - schools
 - other public buildings



COST REDUCTION 2013 – 2014



COST SAVINGS YEAR 1 In relation to operational cost



FACTS:

BUILDING

Construction Year: 1968
 Building Materials: Concrete swimming hall with framed beams insulated with 10 cm rockwool, reinsulated in 2001 with 20 cm ground insulation. Culture section outer wall renovated in 2011, 30 cm rockwool. Library outer wall same, south wall in concrete. The entire roof is reinsulated in 2001.

Building Size: 2890 m²
 Insulation Material: Mineralwool and Rockwool.
 Heating System: Waterborne heating in all floors except entrance hall being electric only.

COSTS 2013 / 2014

Price per kW 2013: € 0,12 per kW
 Price per kW 2014: € 0,11 per kW
 Oil Price 2012: € 1,46 per liter

USE

Sports Complex: 5 Days per week
 Public section: 3 Days per month - Culture Hall, 5 Days per week - Library
 Swimming Pool: 5 Days per week

TEMPERATURE SETTINGS

Indoor: 22° C
 Night Settings: 18° C
 Pool water temp. 29° C

Average Outside Climate 2013 / 2014

